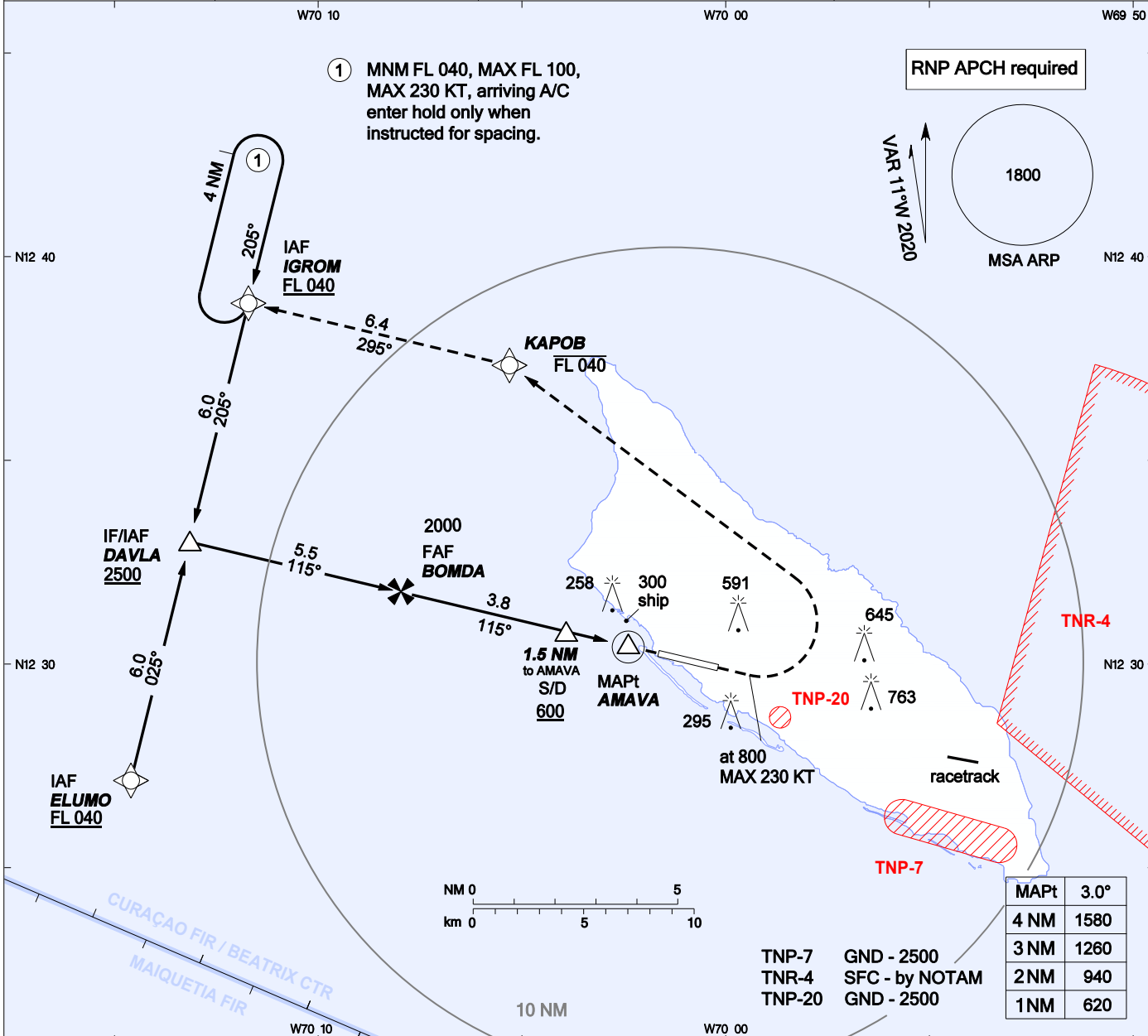
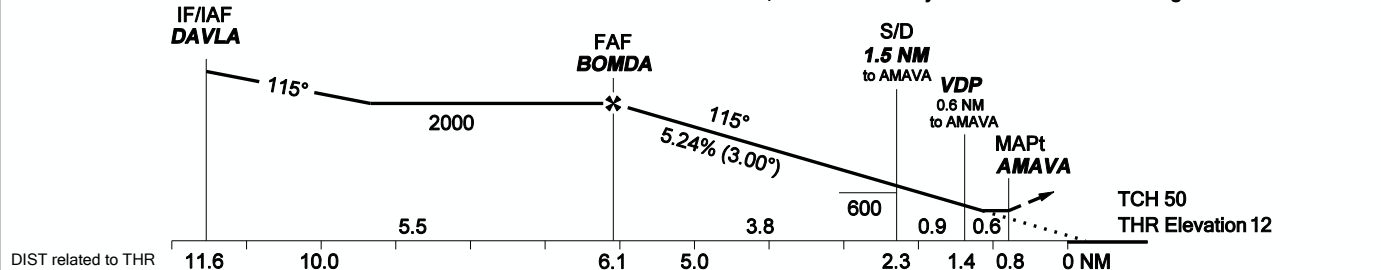


AIP DUTCH CARIBBEAN

INSTRUMENT APPROACH CHART - ICAO	AD ELEVATION: 62 TRANS LEVEL: FL 040 TRANS ALT: 2500 (2438)	BEATRIX: APP 120.9 TWR 118.0 APRON 121.6 ATIS 132.1	RNP RWY 11 REINA BEATRIX INT'L (TNCA) ARUBA
---	--	--	--



MISSED APPROACH: Climb on extended centerline to 800 ft AMSL, then turn left climbing to FL 040 direct KAPOB, then to IGROM and hold, or as directed by ATC. MAX 230 KT through first turn.



OCA(H)	A	B	C	D	GROUNDSPEED - DESCENT RATE						
LNAV/VNAV: MNM TEMP 0°C	440 (428)	440 (428)	440 (428)	440 (428)	KT	70	90	100	120	140	160
LNAV	510 (498)	510 (498)	510 (498)	510 (498)	ft/min	372	478	531	637	743	849
CIRCLING	890 (828)	890 (828)	1160 (1098)	1160 (1098)							

1. Pilots should request RNP approach on first contact with Beatrix tower.
2. Straight-in heights are relative to THR elevation, all other heights are relative to AD elevation
3. Visual descent point (VDP) is where LNAV OCA intersects 3° descent slope.
4. Altitudes, elevations and heights in feet, distances in nautical miles, bearings are magnetic.

CHANGES: Editorial. MAGVAR2020